

Tsuda University

Empowering Women To Make a Difference

Akihisa KODATE, Prof. Dr.-Eng.,
Vice President for Public Relations and Student
College of Policy Studies, Tsuda University

Tsuda Vision 2030



津田塾大学
TSUDA UNIVERSITY

TSUDA VISION
2030

Motto

変革を担う、女性であること

Empowering Women to Make a Difference

津田梅子の想いを、アジアへ、そして世界へ

To share Umeko Tsuda's philosophy throughout Asia and the world

「変革を担う、女性」の持続的研鑽を生涯にわたり支える

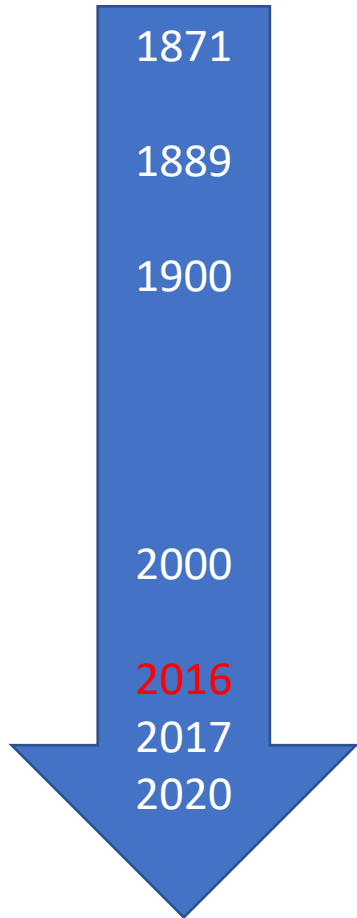
Educating women to make a difference; learning that continues for a lifetime

Participation in the activities of the GTI Consortium

Joined in May, 2017. Total of 144 people have participated in the various programs.

	Global Project Based Learning	Language Training	Special Lectures	Foreign Culture Project Based Learning
2017	1	144		8
2018				1
2019				
2020	2	9	25	
2021	12	15	71	

The History of Tsuda University



- In 1871 Umeko Tsuda, then only six years old, became one of five female members of the 'Iwakura Mission' an effort by Japan to rapidly modernize its society and economy by sending out its best and brightest young people to learn the ways Europe and the United States.
- After spending her entire education in both the United States and the United Kingdom, she returned to Japan and, in an effort to provide a way for women to follow a more independent and proactive path in education, she established **Japan's first private women's university in 1900**.
- Since then the university has remained one of Japan's most prestigious educational institutions, producing a steady stream of strong-willed, independent-minded young women who have contributed greatly to Japan's development. In 2017, the university has opened its **new College of Policy Studies** to further enhance the positive impact it seeks to achieve.
- Celebrated its 120th Anniversary in 2020.

New design for the 5,000-yen bill will feature a portrait of Umeko Tsuda, the founder of Tsuda University.



November, 2021, Bank of Japan
Will be issued in 2024.

Ume Tsuda, the 1st Japanese Female Scientist with English academic publication

THE ORIENTATION OF THE FROG'S EGG. 373

The Orientation of the Frog's Egg.

By

T. H. Morgan, Ph.D.,
Associate Professor of Biology, Bryn Mawr College;

AND

Umé Tsuda,
Teacher in the Peeress' School, Tokio, Japan.

With Plates 24 and 25.

I.

THE classical experiments of Pflüger on the segmenting frog's egg, and the important conclusions drawn by Roux from a study of the same egg, have made it very desirable to have an accurate knowledge of the relation existing between the early segmenting egg and the position of the embryo with respect to the egg.



Tsuda Umeko, age 11 (1875), Tsuda College, Tokyo.

Quarterly Journal of Microscopic Science, vol. 35, New Series, p373-405,1894.

Profile of Tsuda University

- Four undergraduate departments under the **College of Liberal Arts**
 - Dept. of English : 1,034 students (220/year)
 - Dept. of International Relations : 994 students (200/year)
 - Dept. of International Cooperation and Multicultural Studies: 217 students(70/year)
 - Dept. of Mathematics: 214 students (45/year)
 - Dept. of Computer Science: 206 students (45/year)
- Dept. of Policy Studies under **College of Policy Studies**: 477 students(110/year)
- Three graduate programs, English Language and Literature, International Cultural Studies, and Mathematics and Computer Science

Total: 3, 142

Total: 74

As of 1. May 2021



Anna Cope Hartshorne
Memorial Hall
Kodaira Campus
Kodaira, Tokyo



Alice Maybell Bacon
Memorial Hall
Sendagaya Campus
Shibuya, Tokyo

Empowerment of Women through Off-Campus Learning

A Qualitative Change in Education through the Introduction of Gap Terms and the Development of Independent Off-Campus Learning

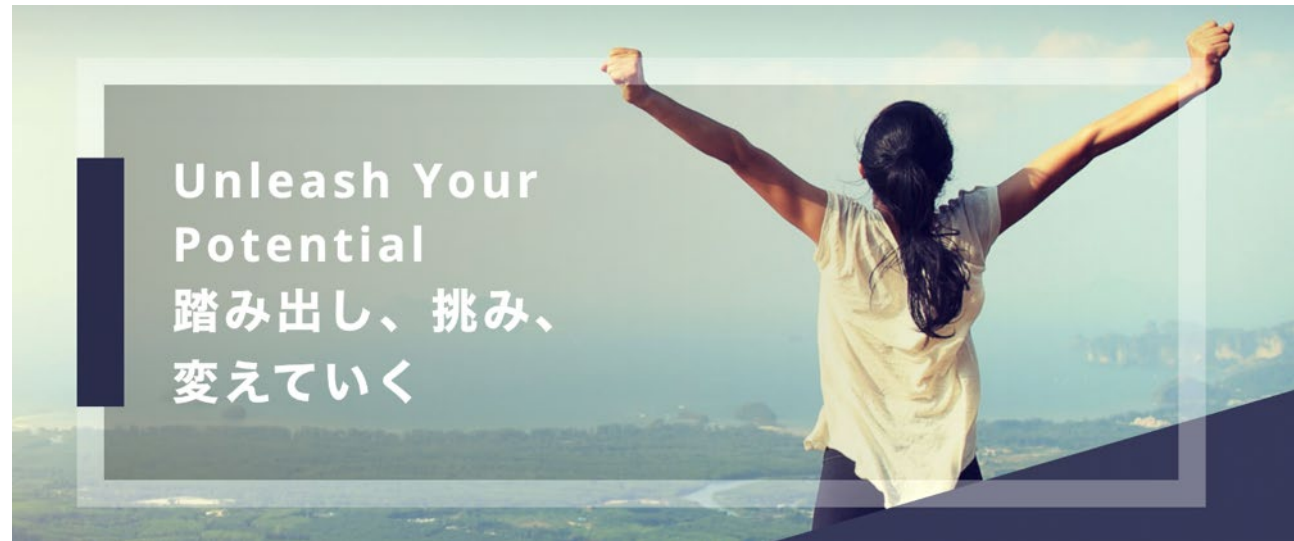
The Accelerated Program for the Revitalization of University Education (AP),
Theme 4: Long-Term Off-Campus Study Program (Gap Year) by MEXT in 2015

- **Modernization of the liberal arts education (Beyond Boundaries Concept)**
- **Providing students with a broad education beyond the boundaries of the disciplines on campus**
- **Promoting the development of new thinking and creativity and create a synergy effect with the high level of expertise fostered by on-campus learning**
- **Nurturing independent women who can contribute to the empowerment of local and international communities**

Off-campus Learning Center and New academic Calendar

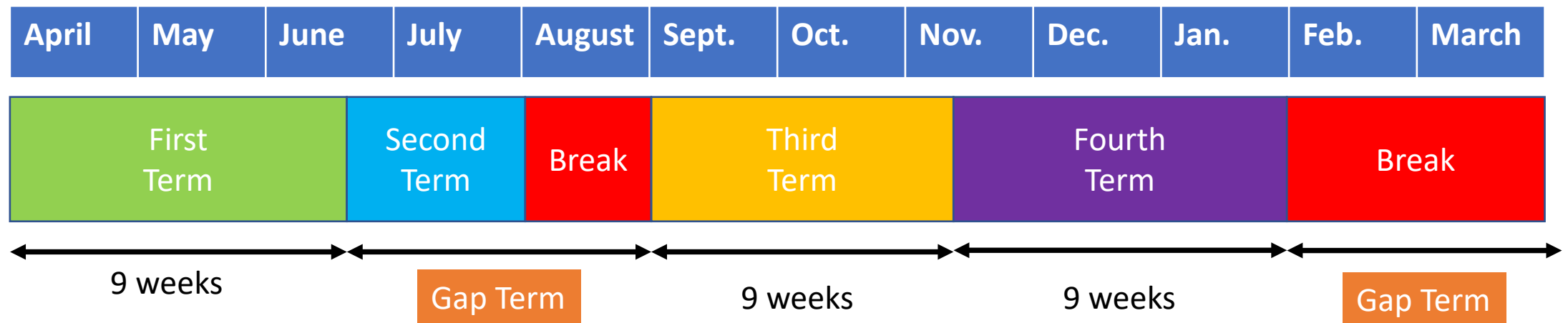
- Reform of the academic calendar by introducing the quarter system (four-term system)
- Introduction of a long-term off-campus study system that emphasizes students' autonomy
- Strengthening the support system by establishing the Off-Campus Learning Center

<https://offcampus.tsuda.ac.jp>



New Academic Calendar

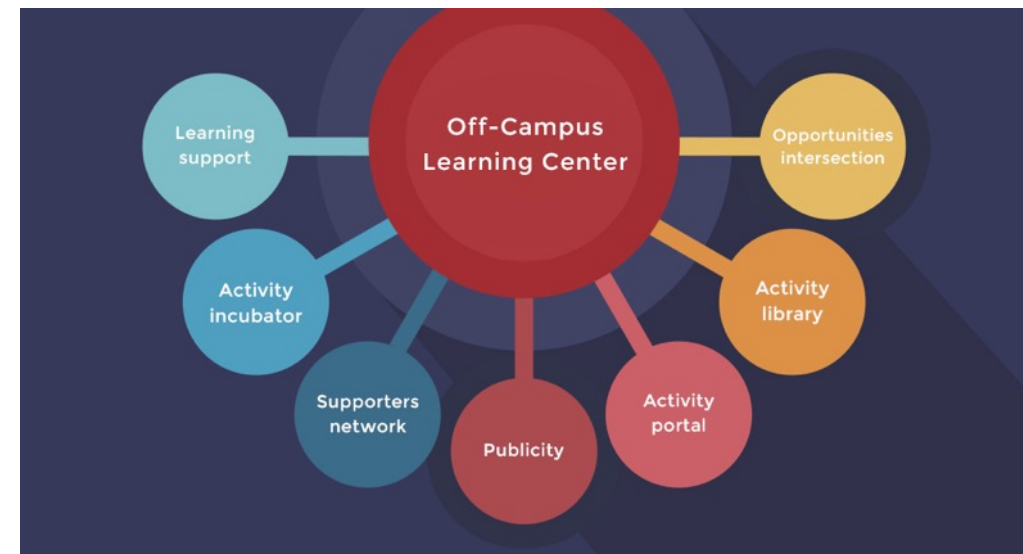
Since 2017, Tsuda University has introduced a new **quarter-based academic calendar**, and the second term, running from mid-June through July and combined with the summer vacation in August, will be a period during which students are encouraged to participate in various kinds of off-campus learning.



Off-campus Learning Center

- Established in April, 2016
- More than 800 students participated in off-campus study, about 240 of them worked in 34 countries overseas.
- “A” rating in the post-evaluation of the Accelerated Program for the Revitalization of University Education
- 7 Roles of the center

<https://offcampus.tsuda.ac.jp/english.html>



Conclusion of Comprehensive Collaborative Agreement and Industry-Academia-Government Partnership

Establishment of The Center for the Promotion of Collaboration in April 2018.

6 Policies

- Create opportunities for women to demonstrate their leadership.
- Encourage students' independent activities and draw out their ability to discover and solve problems.
- Return the results of the educational and research activities of faculty and staff to society.
- Contribute to the sustainable development of local governments across the country, especially the local governments of the university, by resolving local issues.
- To expand opportunities for students to learn through collaboration with other universities.
- Will strive To contribute to society through mutually beneficial activities with companies and organizations.

Conclusion of Comprehensive Collaborative Agreement and Industry-Academia-Government Partnership

	Partners
University	Shibaura Institute of Technology , Kagawa University, The University of Electro-Communications, Kansai University
Government	Shibuya Ward(Tokyo), Shibuya Social Action Partner , Kodaira City(Tokyo), Kokubunji City(Tokyo), Sabae City(Fukui), Iida City(Nagano), Sumida Town(Iwate)
Industry	Narita International Airport Corporation, ITO EN, LTD.,
Public interest incorporated association	Japan Shogi Association, Japan Arts Council
Nonprofit Organization	Sawara Academia

Conclusion of Comprehensive Collaborative Agreement and Industry-Academia-Government Partnership

